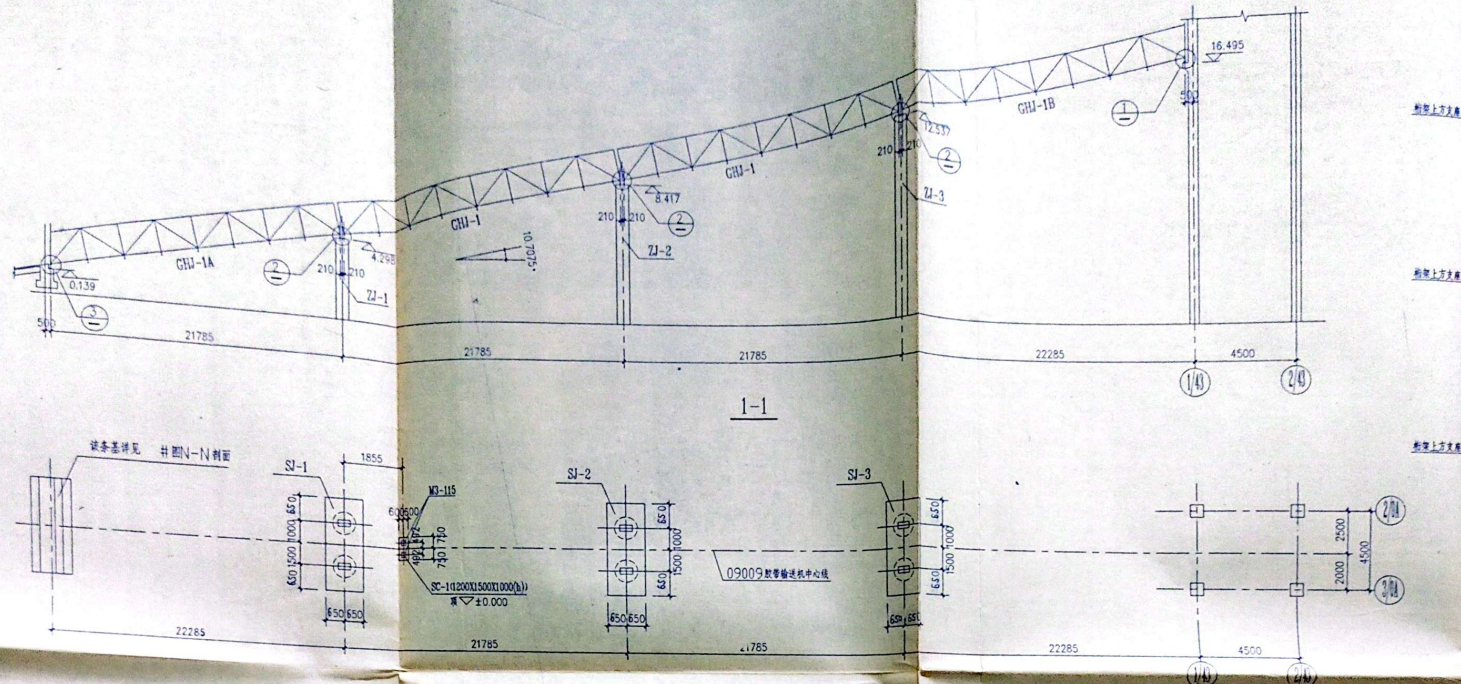


附注:

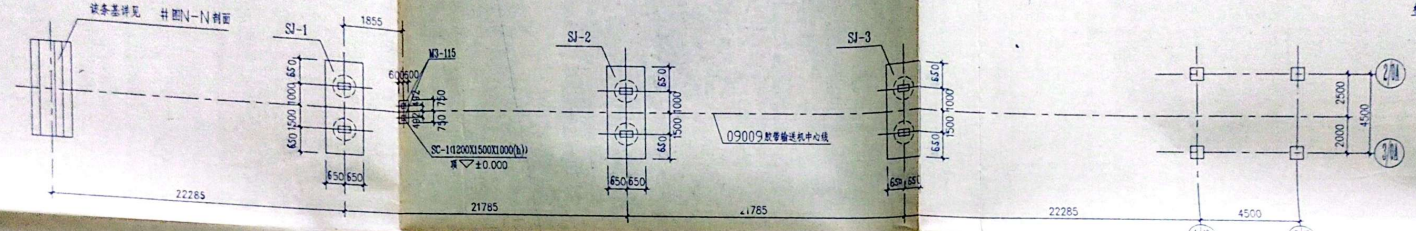
1. 材料: 钢材采用Q235, 焊条采用E43xx.
2. 图中未注明的埋焊厚度均为6mm, 长度一律按触满焊.
3. 所有钢构件按原建筑图.
4. GHJ-1位置见36*图.
5. 安装时请注意钢架的施工方向.
6. 钢架焊缝长度及肢尖均应 > 180mm.
7. 图中构件尺寸仅供参考, 一律以现场实际构件为准.



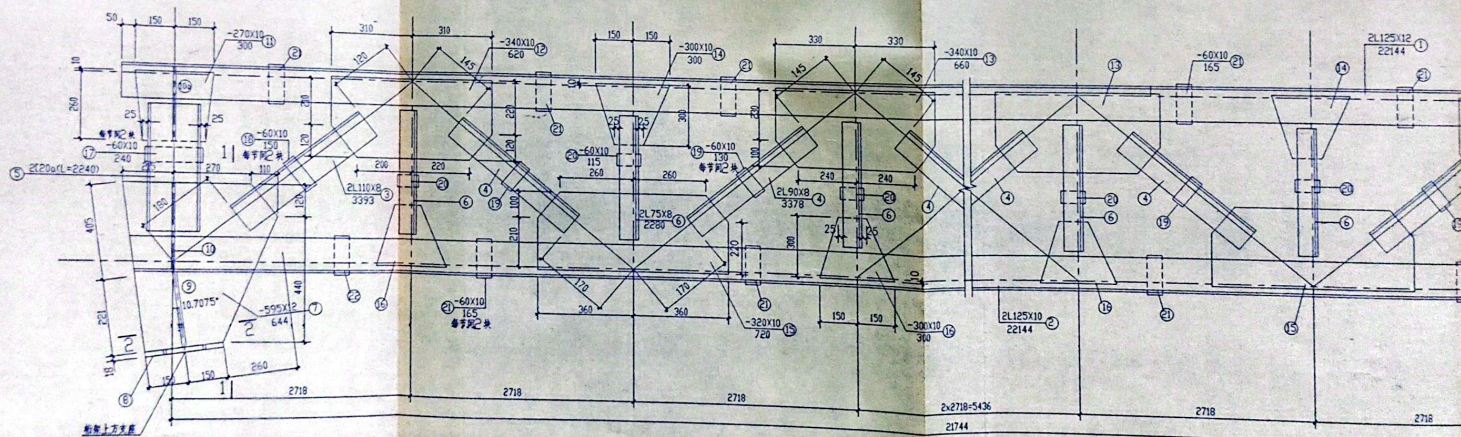
| | | | |
|------------------|--|---------------|--------|
| 贵阳铝镁设计研究院 | | G5179 ± 0 | 2002.8 |
| 石油库全库 | | 0101 | 1:5 |
| 1/1 钢架立面、基础及钢架详图 | | G5179-07b-3/4 | |



1-1



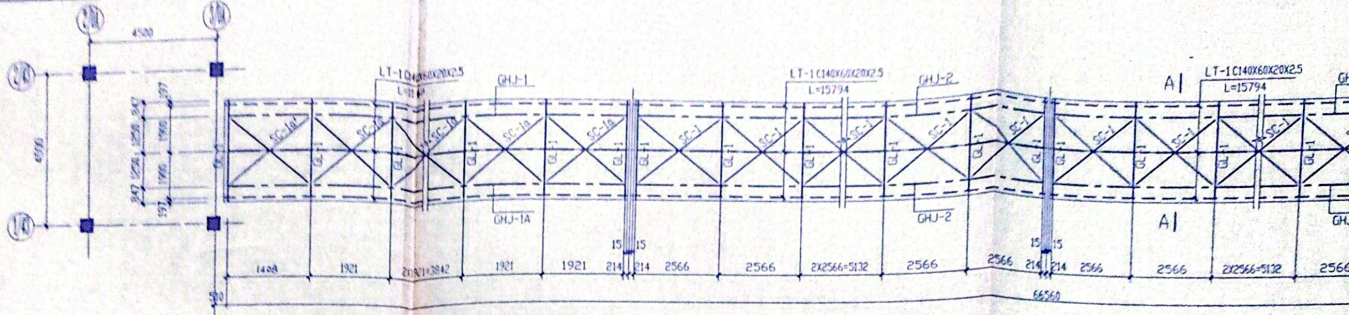
1#皮带廊基础平面图



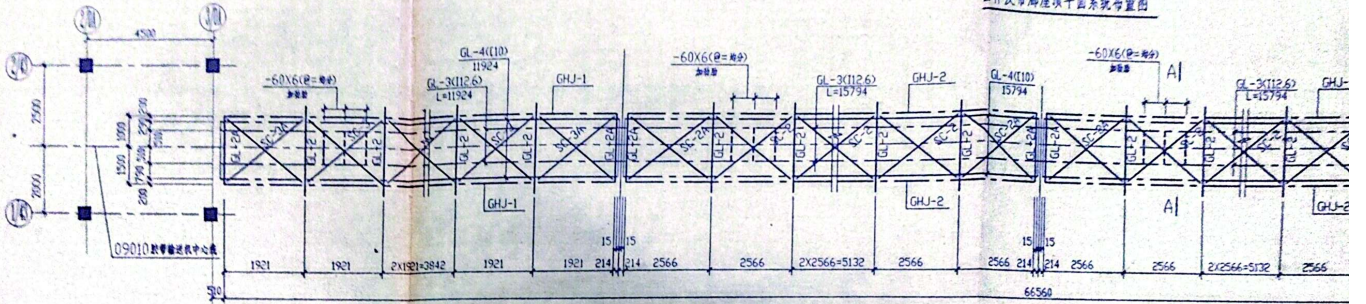
GHJ-1
所有等截面均为等截面梁

6642
 平
 限
 单
 单

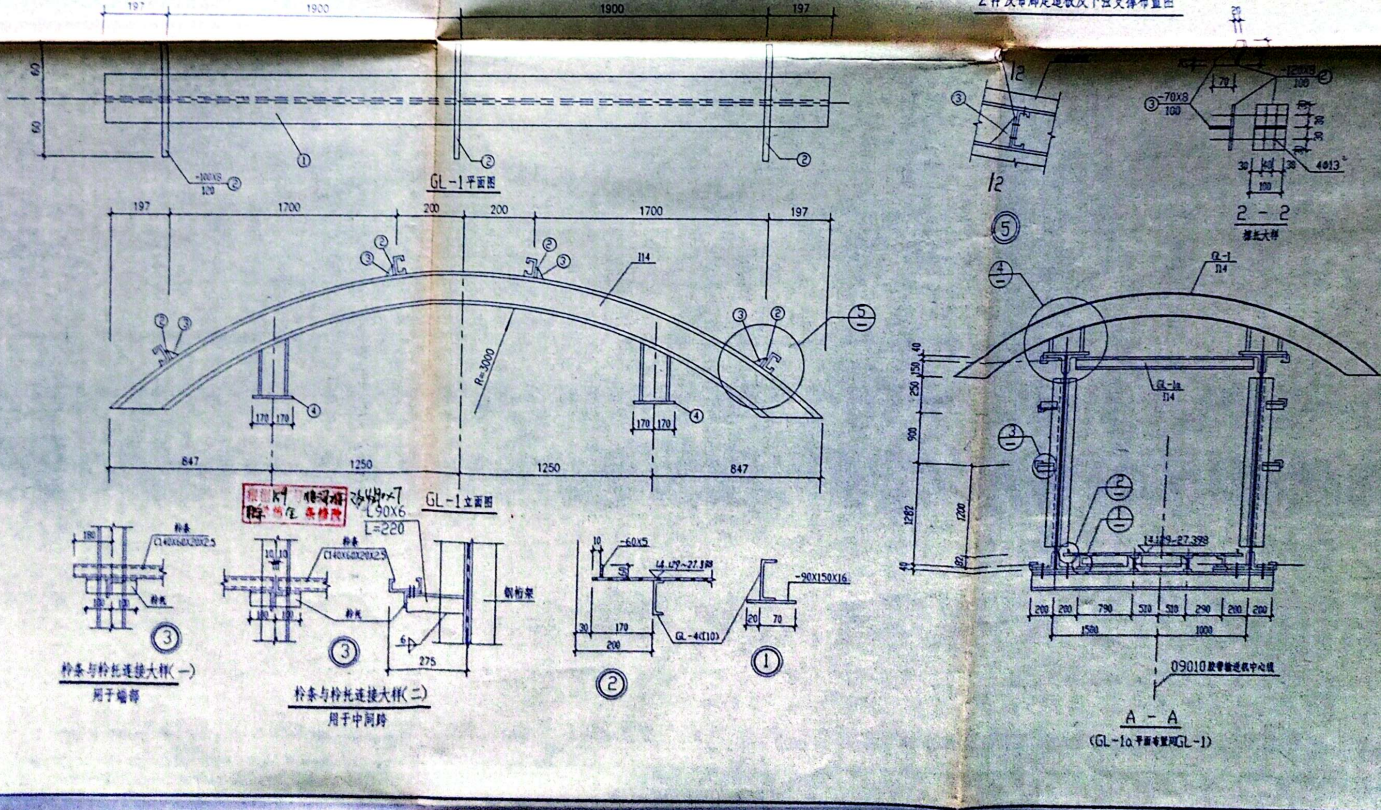
概-216-6.115



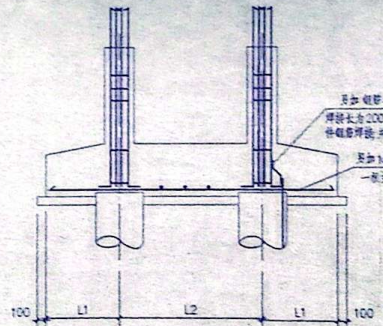
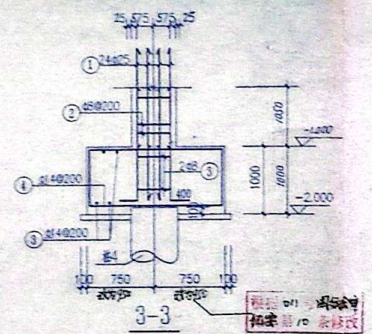
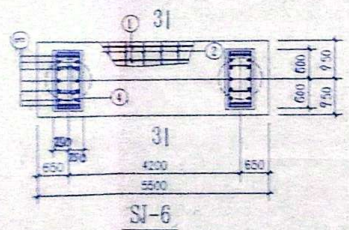
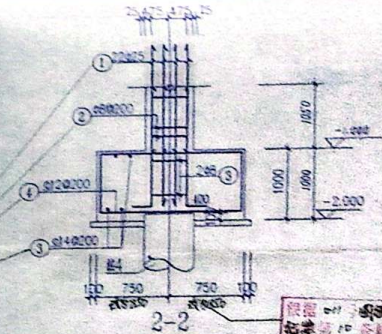
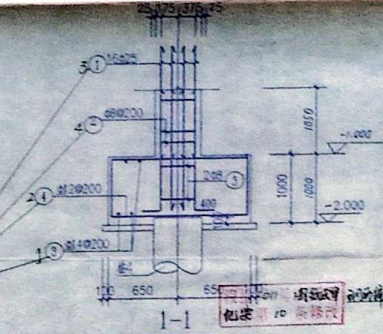
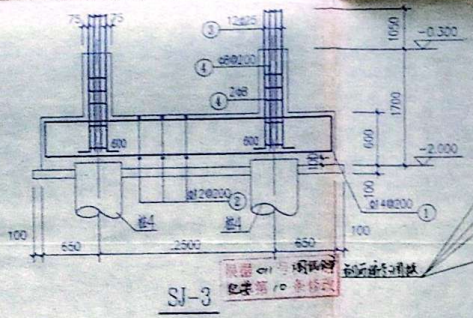
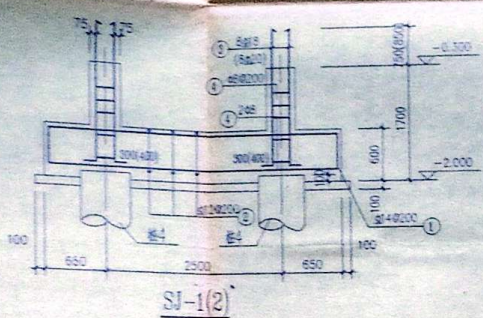
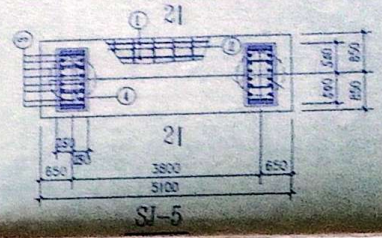
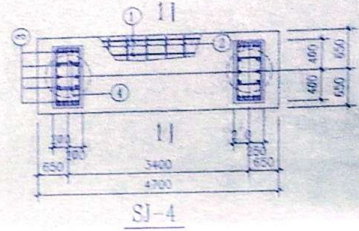
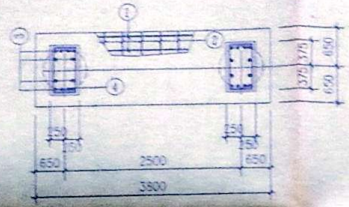
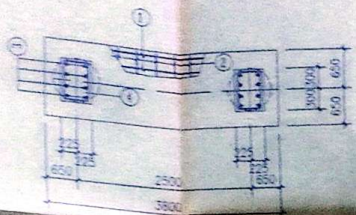
2#皮带廊屋顶平面系统布置图



2#皮带廊走道板及下弦支撑布置图



65179-97b-4



限高 101 同修改
扣架 10 同修改

限高 101 同修改
扣架 10 同修改

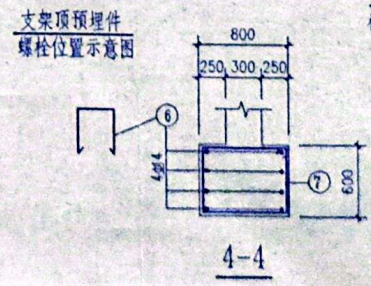
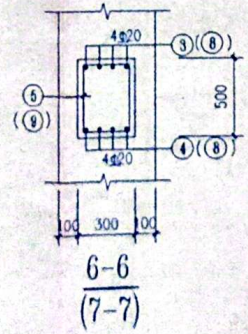
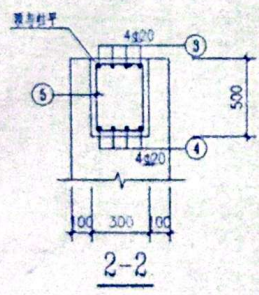
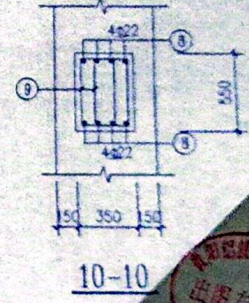
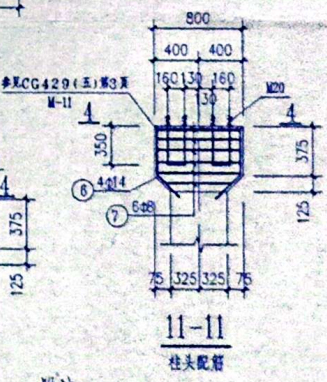
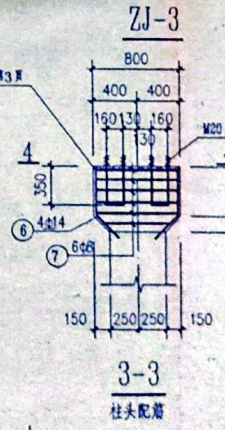
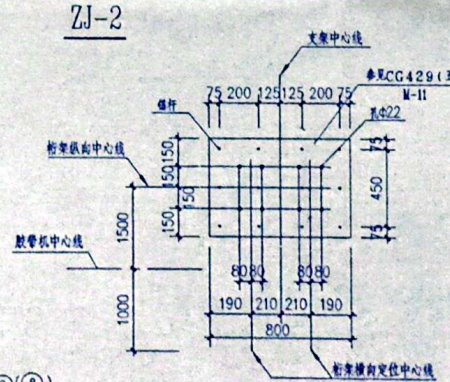
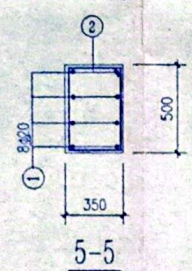
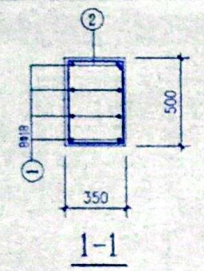
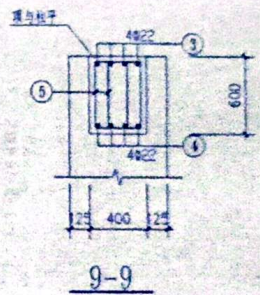
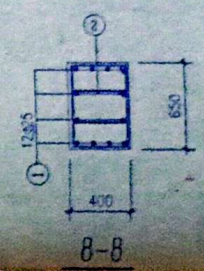
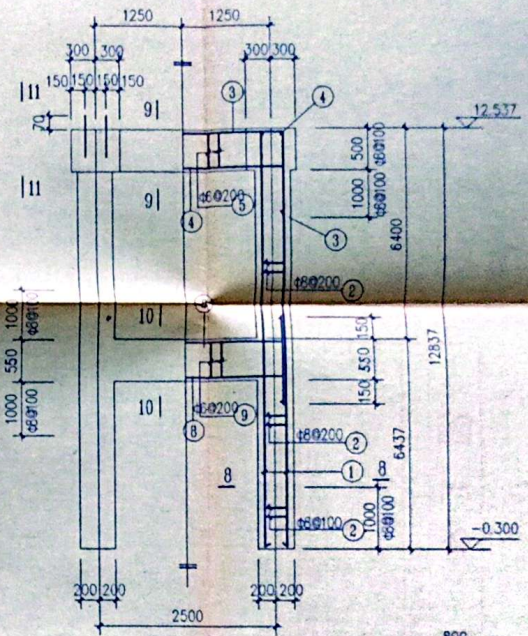
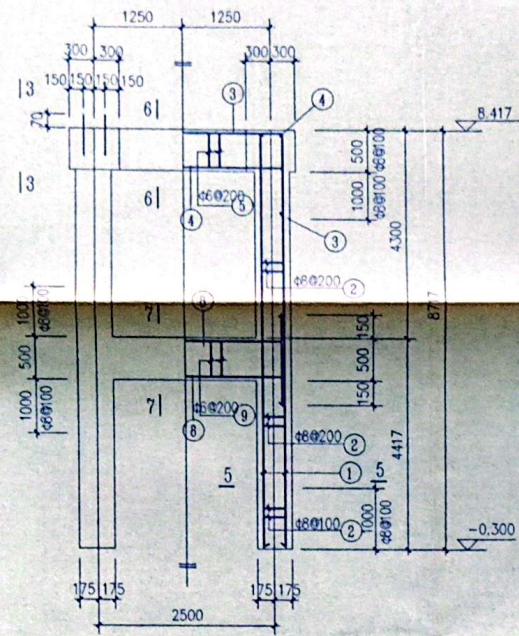
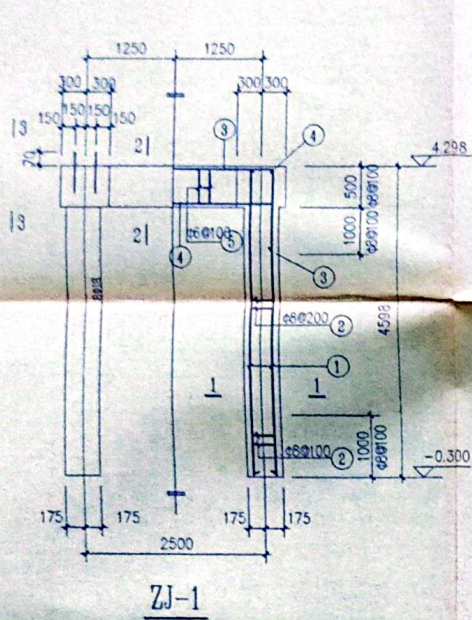
限高 101 同修改
扣架 10 同修改

信成设计
出图专用章
证书号 2400011

附件

1. 材料 C25 混凝土 钢筋 C10 卷板 钢筋板 (20), 11 根 (同)
2. 钢筋保护层: 板底 25, 柱 25
3. 卷板钢筋保护层: 非锚固十四度厚, 锚固及弯钩, 非锚固处不小于锚固长度 50%

| | | | | | |
|-------------|----|----|----|----|-------------|
| 设计 | 审核 | 计算 | 制图 | 校对 | 日期 |
| | | | | | 2015-8-22 |
| 65179-97b-4 | | | | | 29 |
| 信成设计 | | | | | 证书号 2400011 |
| 65179-97b-4 | | | | | 29 |



附注:

- 1, 材料: 梁, 柱, 采用C20砼, ϕ 分别表示I, II级钢
- 2, 保护层: 梁, 柱为25mm
- 3, 埋件做法参见CG429(五)中M-II型埋件, 埋件大小及锚栓位置按本图。

| | | | |
|-----------|----|--------------|-----|
| 贵阳电业设计研究院 | | G5179 工图 | |
| 石油化学分所 | | 2802.8 | |
| 设计 | 审核 | 比例 | 0.5 |
| ZJ-1-3详图 | | G5179-9Tb-42 | |



